

*Ninth Annual*  
**Cardiovascular Emergencies  
Conference 2017**

*An exploration into the expansion  
of time-critical diagnosis*

**Earn up to five *AMA PRA*  
*Category 1 Credits*<sup>™</sup>**

*Sponsored by:*

The Ohio State University Heart and Vascular Center,  
The Ohio State University Division of Cardiovascular  
Medicine and the Ohio Chapter of the American  
College of Cardiology

**SEPTEMBER 15, 2017**

Ohio Union  
1739 N. High St.  
Columbus, Ohio



**Ohio**  
CHAPTER



**THE OHIO STATE UNIVERSITY**

WEXNER MEDICAL CENTER

# Ninth Annual Cardiovascular Emergencies Conference 2017:

*An exploration into the  
expansion of time-critical  
diagnosis*



Ohio State Richard M. Ross Heart Hospital

## SEPTEMBER 15

### TARGET AUDIENCE

Physicians, advanced practice nurses, nurses, physician assistants, EMS and allied healthcare professionals

*The Ninth Annual Cardiovascular Emergencies Conference brings together a multidisciplinary group of experts to explore the breadth of options for time-critical diagnosis treatments available at The Ohio State University Wexner Medical Center. Experts in cardiovascular medicine, cardiothoracic surgery, vascular surgery, critical care medicine, trauma surgery and neurovascular critical care will discuss unique program developments and present novel cases that push the boundaries of modern medicine. This course will provide physicians, nurses, allied healthcare providers and emergency medical personnel with information regarding the most current evidence-based practices and treatment modalities and will highlight the importance of interdisciplinary collaboration throughout all phases of care in order to achieve optimal outcomes.*

At the conclusion of this activity, participants should be able to:

1. Describe current evidence-based recommendations for the treatment of time-critical diagnosis conditions
2. Identify strategies to integrate current guidelines into practice
3. Describe the importance of interdisciplinary collaboration throughout each phase of care
4. Demonstrate awareness of evolving technologies, therapies and programs that improve outcomes in the treatment of time-critical diagnosis conditions

# Course agenda

## SEPTEMBER 15 – MAIN SESSION

7:45 - 8:30 a.m.	<b>REGISTRATION</b>
8:30 - 8:45 a.m.	<b>OPENING REMARKS</b> <b>Time-Critical Diagnosis</b> Raymond Magorien, MD, and Ernest Mazzaferri Jr., MD
8:45 - 9 a.m.	<b>Optimizing Your STEMI Network to Decrease Medical Contact to Reperfusion Time</b> Konstantinos Dean Boudoulas, MD
9 - 9:15 a.m.	<b>Extracorporeal Cardiopulmonary Resuscitation for Refractory Ventricular Tachyarrhythmias</b> Ernest Mazzaferri Jr., MD
9:15 - 9:30 a.m.	<b>Induced Hypothermia Post-Cardiac Arrest: Why, When and How</b> Eric Adkins, MD
9:30 - 9:45 a.m.	<b>A System Approach to Treating Acute Pulmonary Embolism</b> Raymond Magorien, MD
9:45 - 10:05 a.m.	<b>Questions and Answers</b> Moderator: Konstantinos Dean Boudoulas, MD Panel: Eric Adkins, MD; Raymond Magorien, MD; and Ernest Mazzaferri Jr., MD
10:05 - 10:20 a.m.	<b>BREAK</b>
10:20 - 10:35 a.m.	<b>Nontraumatic Acute Aortic Emergencies</b> Gregory Rushing, MD
10:35 - 10:50 a.m.	<b>Advances in Neuro-Endovascular Care for Acute Stroke</b> Ciaran Powers, MD, PhD
10:50 - 11:05 a.m.	<b>The Use of New Technology in Mass Casualty Situations and the Intensive Care Unit</b> Daniel Vazquez, MD
11:05 - 11:20 a.m.	<b>Mandated Emergency Department Care for Sepsis: The New York Experience</b> Naeem Ali, MD
11:20 - 11:40 a.m.	<b>Questions and Answers</b> Moderator: Konstantinos Dean Boudoulas, MD Panel: Naeem Ali, MD; Ciaran Powers, MD, PhD; Gregory Rushing, MD; and Daniel Vazquez, MD
11:40 a.m. - 12:40 p.m.	<b>LUNCH</b>

# Course agenda

## BREAKOUT SESSION ONE – CASE PRESENTATIONS

- 12:40 - 1:40 p.m. **CONFERENCE ROOM A**  
***STEMI – ST-Elevation Myocardial Infarction***  
Case 1: Multivessel revascularization in STEMI?  
Case 2: Radial artery access for STEMI with shock  
Case 3: STEMI nightmares  
Quinn Capers IV, MD; Scott Lilly, MD, PhD; and Umair Ahmad, MD
- 12:40 - 1:40 p.m. **CONFERENCE ROOM B**  
***ECLS – Extracorporeal Life Support***  
Case 1: EMS option for refractory VT ... ECMO in the cath lab?  
Case 2: Prolonged CPR with elevated lactate, proceed with ECMO?  
Case 3: Is PEA arrest next?  
Konstantinos Dean Boudoulas, MD; Abiodun Ishola, MD;  
Jennifer Johnson, BSN, RN; David Keseg, MD; Ernest Mazzaferri Jr., MD;  
Bassam Shukrallah, MD; Bryan Whitson, MD, PhD
- 12:40 - 1:40 p.m. **CONFERENCE ROOM C**  
***Trauma Surgery Case Studies***  
Case 1: Aortic transection  
Case 2: Transmediastinal GSW  
Case 3: Run-in with a tree  
David Lindsey, MD, and Steven Steinberg, MD
- 12:40 - 1:40 p.m. **CONFERENCE ROOM D**  
***Acute Pulmonary Embolism***  
Case 1: Catheter-directed pulmonary artery thrombolytic therapy  
Case 2: Acute pulmonary embolus and right atrial thrombus  
Case 3: Systemic thrombolytic therapy: Is there still a role?  
Talal Attar, MD, MBA; Cindy Baker, MD; Raymond Magorien, MD; and  
Nader Makki, MD
- 1:40 - 1:55 p.m. **BREAK**

## BREAKOUT SESSION TWO – CASE PRESENTATIONS

- 1:55 - 2:55 p.m. **CONFERENCE ROOM A**  
***Sepsis***  
Case 1: Understanding the new definition of sepsis (Sepsis-3)  
Case 2: Systematic approach to providing hemodynamic support in sepsis  
Case 3: Bridging the gap in sepsis care from prehospital to ED to ICU  
Eric Adkins, MD; Matthew Exline, MD; and Carleen Risaliti, MD
- 1:55 - 2:55 p.m. **CONFERENCE ROOM B**  
***ECLS – Extracorporeal Life Support***  
Case 1: EMS to ECMO in the cath lab? A system approach to ECLS  
Case 2: Prolonged CPR with elevated lactate, proceed with ECMO?  
Case 3: Is PEA arrest next?  
Konstantinos Dean Boudoulas, MD; Abiodun Ishola, MD;  
Jennifer Johnson, BSN, RN; David Keseg, MD; Ernest Mazzaferri Jr., MD;  
Bassam Shukrallah, MD; Bryan Whitson, MD, PhD
- 1:55 - 2:55 p.m. **CONFERENCE ROOM C**  
***Trauma Surgery Case Studies***  
Case 1: Aortic Transection  
Case 2: Transmediastinal GSW  
Case 3: Run in with a Tree  
David Lindsey, MD and Steven Steinberg, MD
- 1:55 - 2:55 p.m. **CONFERENCE ROOM D**  
***Acute Pulmonary Embolism***  
Case 1: Catheter-directed pulmonary artery thrombolytic therapy  
Case 2: Acute pulmonary embolus and right atrial thrombus  
Case 3: Systemic thrombolytic therapy: Is there still a role?  
Talal Attar, MD, MBA; Cindy Baker, MD; Raymond Magorien, MD; and  
Nader Makki, MD

# Conference faculty

# Conference faculty

## The Ohio State University Heart And Vascular Center



**Eric Adkins, MD**  
Assistant Professor of Emergency  
Medicine and Critical Care  
Vice Chair of Clinical Affairs  
Department of Emergency  
Medicine



**Umair Ahmad, MD**  
Interventional Cardiology Fellow  
Division of Cardiovascular  
Medicine



**Naeem Ali, MD**  
Associate Professor of Medicine  
Division of Pulmonary, Critical Care and  
Sleep Medicine  
Medical Director, University  
Hospital  
Director, Critical Care Clinical  
Operations



**Cindy Baker, MD**  
Assistant Professor of Medicine  
Division of Cardiovascular  
Medicine  
Director, Peripheral Vascular  
Interventions



**Konstantinos Dean Boudoulas,  
MD\***  
Co-Course Director  
Associate Professor of Medicine  
Division of Cardiovascular  
Medicine  
Section Head, Interventional  
Cardiology  
Director, Cardiac Catheterization  
Laboratory, Ross Heart Hospital



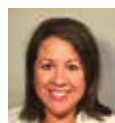
**Quinn Capers IV, MD**  
Associate Professor of Medicine  
Division of Cardiovascular Medicine  
Associate Dean of Admissions, The Ohio  
State University College of Medicine  
Director, Interventional Cardiology  
Fellowship



**Matthew Exline, MD**  
Associate Professor of Medicine  
Division of Pulmonary, Critical Care and  
Sleep Medicine  
Medical Director, Medical Intensive  
Care Unit  
Vice Chair of Finance, Department of  
Internal Medicine



**Abiodun Ishola, MD**  
Interventional Cardiology Fellow  
Division of Cardiovascular Medicine



**Jennifer Johnson, BSN, RN**  
Interventional Cardiology  
Laboratories  
Richard M. Ross Heart Hospital



**Rita Johnson, MS, RN, CEN**  
Level I Heart and Vascular Emergency  
Program Manager  
Richard M. Ross Heart Hospital



**David Keseg, MD**  
Associate Professor of Emergency  
Medicine  
Department of Emergency  
Medicine  
Medical Director, Columbus Division of  
Fire



**Scott Lilly, MD, PhD**  
Assistant Professor of Internal  
Medicine  
Division of Cardiovascular  
Medicine  
Co-Director, Structural Heart Disease  
Program



**David Lindsey, MD**  
Associate Professor of Surgery  
Division of Trauma, Critical Care and  
Burn



**Raymond Magorien, MD\***  
Co-Course Director  
Associate Professor of Medicine  
Division of Cardiovascular  
Medicine  
Director, Level I Cardiac and Vascular  
Emergency Program



**Nader Makki, MD**  
Interventional Cardiology Fellow  
Division of Cardiovascular  
Medicine



**Ernest Mazzaferri Jr., MD\***  
Co-Course Director  
Associate Professor of Medicine  
Division of Cardiovascular  
Medicine  
Medical Director, Richard M. Ross Heart  
Hospital



**Ciaran Powers, MD, PhD**  
Assistant Professor of Surgery  
Department of Neurological  
Surgery



**Carleen Risaliti, MD**  
Assistant Professor of Internal  
Medicine  
Division of Pulmonary, Critical Care  
and Sleep Medicine  
Assistant Director of Residency Program,  
Department of Internal Medicine



**Gregory Rushing, MD**  
Assistant Professor of Surgery  
Division of Cardiac Surgery



**Bassam Shukrallah, MD**  
Assistant Professor of Surgery  
Division of Cardiac Surgery



**Steven Steinberg, MD**  
Professor of Surgery  
Division of Trauma, Critical Care and  
Burn  
Professor of Anesthesiology  
Department of Anesthesiology



**Daniel Vazquez, MD**  
Assistant Professor of Surgery  
Division of Trauma, Critical Care and  
Burn



**Bryan Whitson, MD, PhD**  
Assistant Professor of Surgery  
Division of Cardiac Surgery  
Medical Director of End-Stage  
Cardiopulmonary Failure Program

*\*Members of the conference planning  
committee*

## ACCESSING YOUR CME CERTIFICATE

**Printing your Continuing Medical Education (CME) certificate:** Your certificate will be available on the Ohio State CME website in two weeks. Please visit [ccme.osu.edu](http://ccme.osu.edu).

### **Having problems printing your CME certificate?**

For assistance please contact:

Jon Hollett  
Director, Continuing Medical Education  
The Ohio State University Wexner Medical Center  
University Hospital East  
1492 E. Broad St., Suite 1603  
Columbus, Ohio 43205  
phone: 614-257-3638  
[jon.hollett@osumc.edu](mailto:jon.hollett@osumc.edu)

## ACCESSING THE CLOUD FOR COURSE SYLLABUS AND SLIDES

To enhance the “green” nature of our conference, paper syllabi will not be available. However, copies of all presentations will be available for download after the conference from BuckeyeBox, the university’s cloud server.

If you wish to access the cloud for the course syllabus and slides and had not requested access prior to the conference, please email Holly Tufts at [holly.tufts@osumc.edu](mailto:holly.tufts@osumc.edu) to request access to the Cardiovascular Emergencies Conference Cloud. Please be sure to include your name and email address in the request.

After your request has been received, you will receive an invitation to access the cloud. Please click on the “view folder” button provided in the email, and you will be able to access the conference slides. Please save the email for easy access to the BuckeyeBox’s Cloud and to the course presentations.



Ohio  
CHAPTER



THE OHIO STATE UNIVERSITY  
WEXNER MEDICAL CENTER