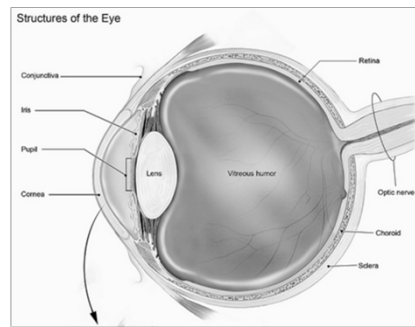


Common Eye Injuries

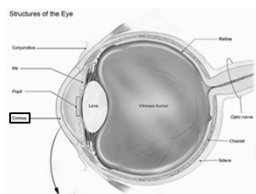
Mona Adeli, MD
Assistant Clinical Professor of Ophthalmology
Havener Eye Institute
Department of Ophthalmology and Visual Science
The Ohio State University

Brief Overview of Eye Anatomy



Source: National Eye Institute

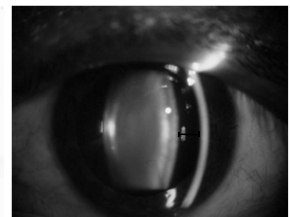
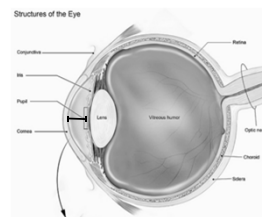
Cornea



Source: National Eye Institute

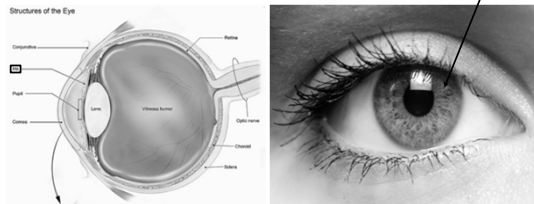
Author: Paul Savage - (CC BY 2.0)

Anterior Chamber



Source: National Eye Institute

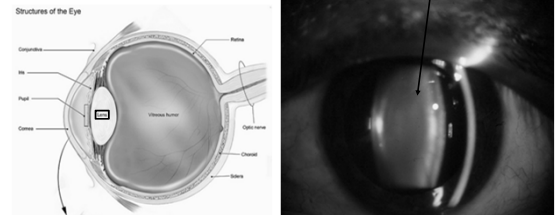
Iris



Source: National Eye Institute

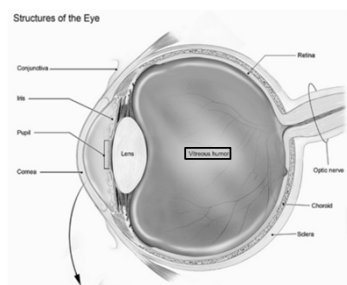
Author: Laitr Keiows - (CC BY-SA 3.0)

Lens



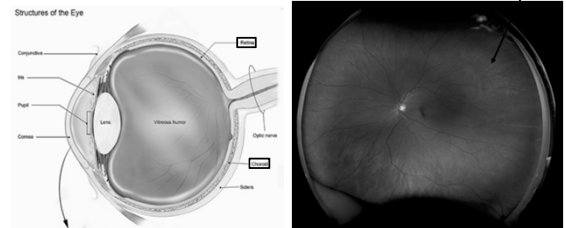
Source: National Eye Institute

Vitreous Cavity



Source: National Eye Institute

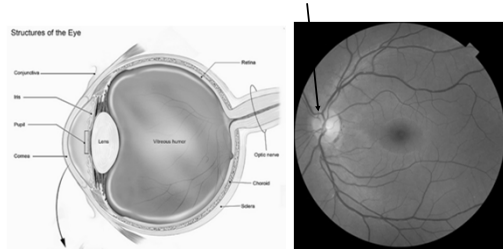
Retina / Choroid



Source: National Eye Institute

Author: Optomap - (CC BY-SA 4.0)

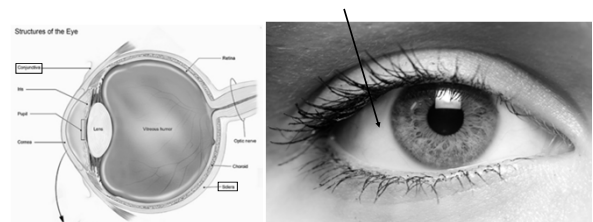
Optic Nerve



Source: National Eye Institute

Author: By Mikael Häggström, used with permission.

Sclera / Conjunctiva



Source: National Eye Institute

Author: Laitr Keiows - (CC BY-SA 3.0)

Common Eye Injuries

Tyler Oostra, MD
Assistant Professor – Clinical
Department of Ophthalmology
The Ohio State University Wexner Medical Center



Images by EyeRounds.org,
 The University of Iowa - (CC BY-NC-ND 3.0)

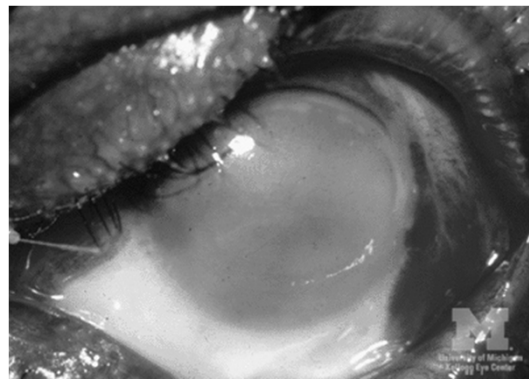
Corneal Abrasion

- Symptoms: sharp pain, photophobia, foreign body sensation, history of trauma
- Signs: epithelial defect that stains with fluorescein
- Treatment
 - Antibiotic drops or ointment (e.g. erythromycin, bacitracin, polymyxin B/trimethoprim)
 - If contact lens wearer, consider fluoroquinolone drops
 - No patching or anesthetic drops, no contact lens wear
- Follow-up: 1-5 days to ensure improvement or resolution



Corneal Ulcer

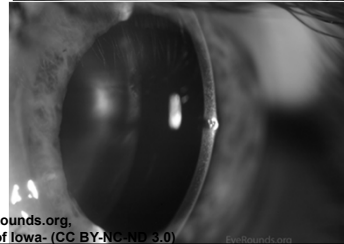
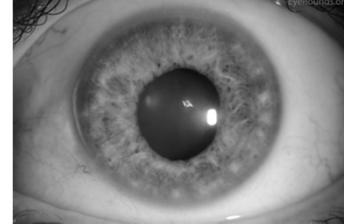
- Symptoms: redness, pain, photophobia, decreased vision, discharge
- Signs: white corneal infiltrate with overlying epithelial defect
- Treatment
 - Bacterial: fluoroquinolone drops (e.g. ciprofloxacin or moxifloxacin) for low risk ulcers, fortified antibiotics for higher risk ulcers
 - Cycloplegic drops
 - No patching or anesthetic drops, no contact lens wear
- Refer immediately



Source: The University of Michigan - (CC BY 3.0 US)

Chemical Burn

- Symptoms: redness, pain, photophobia, decreased vision, history of chemical injury
- Signs: epithelial defect or corneal opacification, injection or blanching of conjunctival vessels, chemosis
- Treatment
 - Immediate copious irrigation with saline or Ringer lactate solution until neutral pH is achieved
 - Sweep conjunctival fornices, evert eyelids
 - Antibiotic ointment and cycloplegic drops
- Refer if vision is decreased



Images by EyeRounds.org,
The University of Iowa- (CC BY-NC-ND 3.0)

Corneal and Conjunctival Foreign Bodies

- Symptoms: foreign body sensation, tearing
- Signs: presence of foreign body, rust ring
- Treatment
 - Remove superficial foreign bodies with irrigation, cotton-tipped applicator, fine forceps, or foreign body spud
 - Treat similarly to corneal abrasion with antibiotic drops or ointment
- Refer if foreign body is not superficial or unable to remove easily

Common Eye Injuries

Mona Adeli, MD
Assistant Clinical Professor of Ophthalmology
Havener Eye Institute
Department of Ophthalmology and Visual Science
The Ohio State University



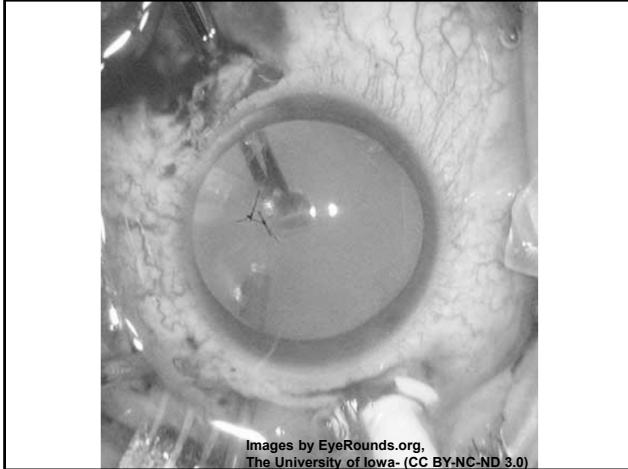
Conjunctival Laceration

- Symptoms: hx of trauma, mild pain, foreign body sensation, redness
- Signs: conjunctival defect with fluorescein uptake, exposed white sclera, subconjunctival hemorrhage
- Treatment
 - Antibiotic ointment
 - Large lacerations > 1.0 cm may require suturing
- Refer immediately – rule out penetrating or perforating eye injury, intraocular foreign body



Corneal / Scleral Lacerations or Rupture aka “Open Globe”

- Symptoms: hx of trauma, pain, decreased vision, loss of fluid from the eye
- Signs: full thickness laceration, hemorrhagic chemosis, shallow or deep anterior chamber, peaked or irregular pupil
- Treatment
 - Surgical repair in the operating room
 - In the meantime: hard eye shield, NPO, pain and nausea control, IV access, systemic antibiotics, bedrest, tetanus prophylaxis
- Refer immediately

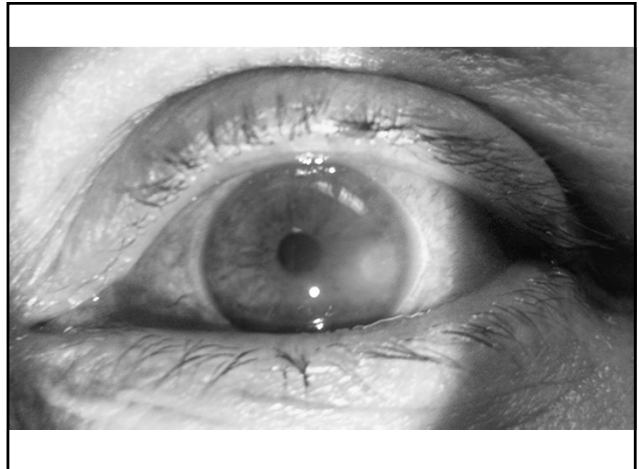


Intraocular Foreign Body

- Symptoms: may be similar to that of open globe, hx of sharp object entering eye or hammering metal
- Signs: may be similar to that of open globe, or entry site may not be readily apparent
- Treatment
 - Acute IOFB: surgical removal
 - Chronic IOFB: surgical removal if associated with inflammation
- Refer immediately if acute

Common Eye Injuries

Tyler Oostra, MD
Assistant Professor – Clinical
Department of Ophthalmology
The Ohio State University Wexner Medical Center



Traumatic Iritis

- **Symptoms:** dull throbbing pain, photophobia, recent trauma
- **Signs:** white blood cells and flare in the anterior chamber, perilimbal injection
- **Treatment**
 - Cycloplegic drops
 - Cautious use of steroid drops
- **Refer** if no improvement in 2-3 days or associated with other injuries

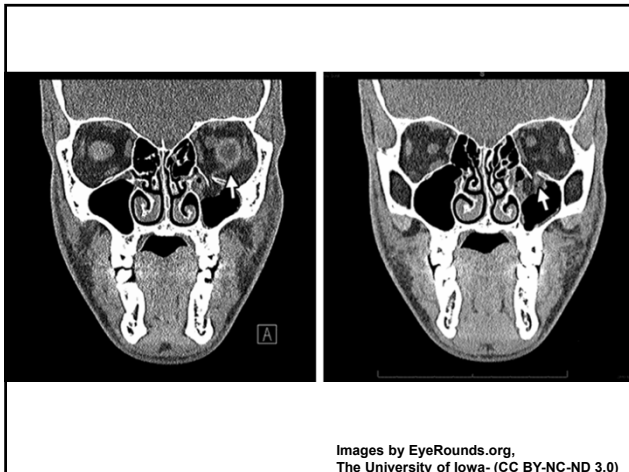


Hyphema

- **Symptoms:** pain, decreased vision, history of blunt trauma
- **Signs:** blood in the anterior chamber
- **Treatment**
 - Bed rest, elevate head of bed, eye shield
 - No blood thinners
 - Cycloplegic drops
 - Steroid drops
 - IOP lowering drops as needed
- **Refer** immediately

Common Eye Injuries

Mona Adeli, MD
Assistant Clinical Professor of Ophthalmology
Havener Eye Institute
Department of Ophthalmology and Visual Science
The Ohio State University



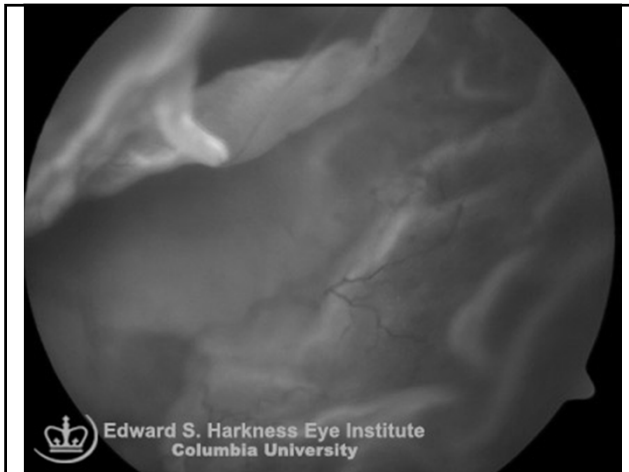
Orbital Fractures / Entrapment

- Symptoms: hx of trauma, periorbital swelling, double vision, pain with eye movement
- Signs: restricted extraocular motility, hypesthesia in distribution of infraorbital nerve, periorbital edema, enophthalmos, hypoglobus
- Treatment:
 - CT orbits / face
 - Considerations: oral antibiotics, corticosteroids, nasal decongestants, sinus precautions
 - Immediate repair if muscle entrapment
 - Delayed repair if persistent diplopia or large fracture
- Refer immediately – rule out ocular injury, entrapment



Retrobulbar Hemorrhage

- Symptoms: hx of trauma, pain, decreased vision, inability to open eyelids
- Signs: proptosis, resistance to retropulsion, tense eyelids that are difficult to open, increased intraocular pressure, possible vision loss or afferent pupillary defect
- Treatment: urgent lateral canthotomy and cantholysis
- Refer immediately – consider ED vs local ophthalmologist



Retinal Tears and Detachments

- Symptoms: flashes, floaters, may have decreased vision or a curtain/shadow in vision
- Signs: pigment in anterior vitreous, retinal tear/flap, elevation of retina by subretinal fluid
- Treatment
 - Laser retinopexy in acute symptomatic or traumatic break
 - Surgical repair – urgent if threatens the fovea, less urgently if macula is off
- Refer immediately